




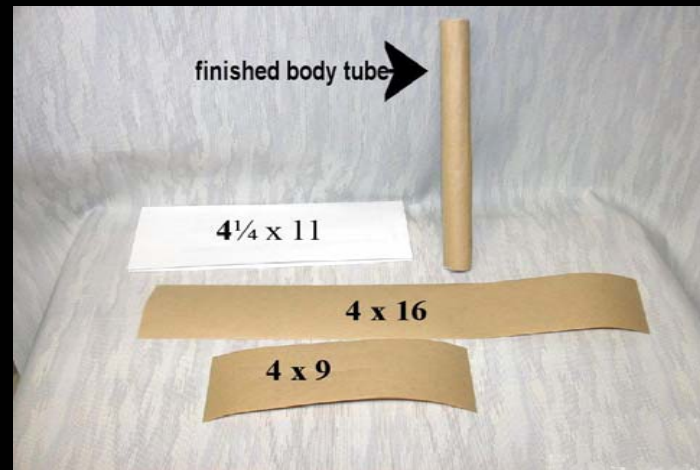
BUILDING A SOLID ENGINE ROCKET



*Today you are going to start the
assembly of
your rocket, which you will launch
at a later date.*

BILL OF MATERIALS for BODY TUBE

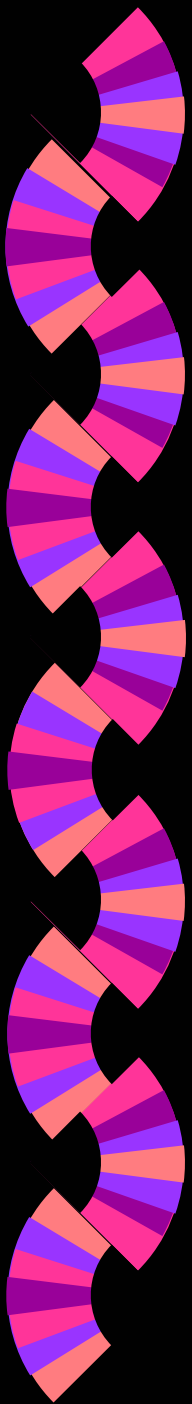
- 4 1/4 " X 11" PLAIN PAPER
- 3" X 16" PAPER TAPE
- 3" X 9" PAPER TAPE



Making Body Tube

Use 1" Dowel Rod

- Put glue 1/4" from 11" edge
- Smooth Out paper
- Roll snugly around 1" dowel rod
- Cut end of 16" paper paper tape at 45 angle
- Lift corner and roll to make paper towel tube
- Roll 9" length wise around tube,

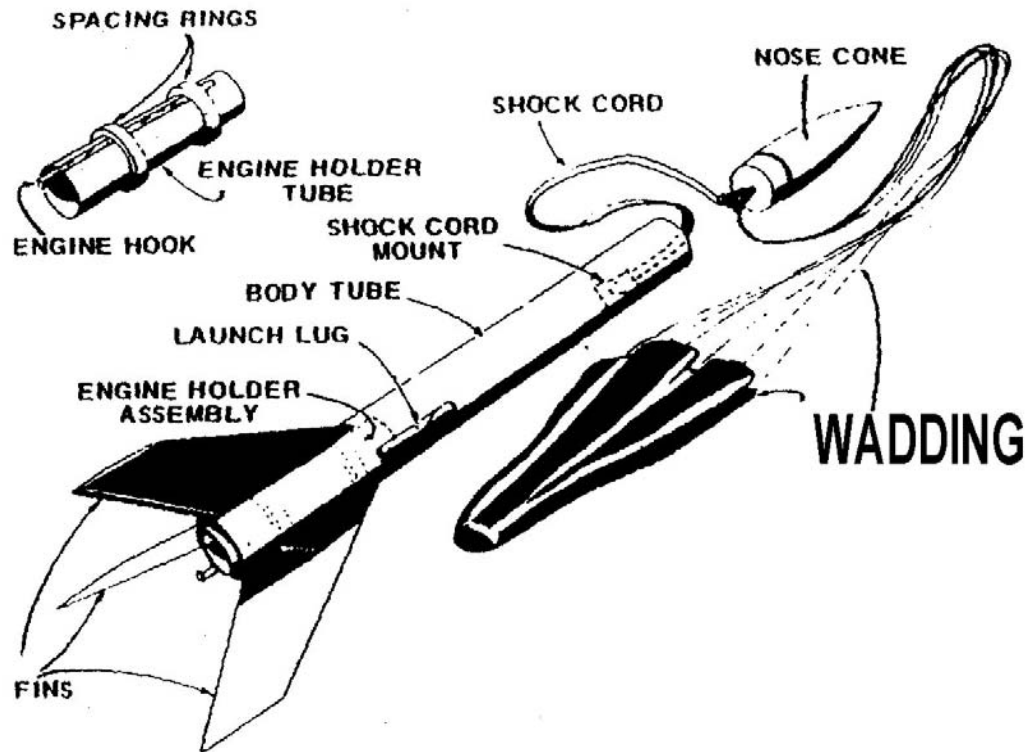


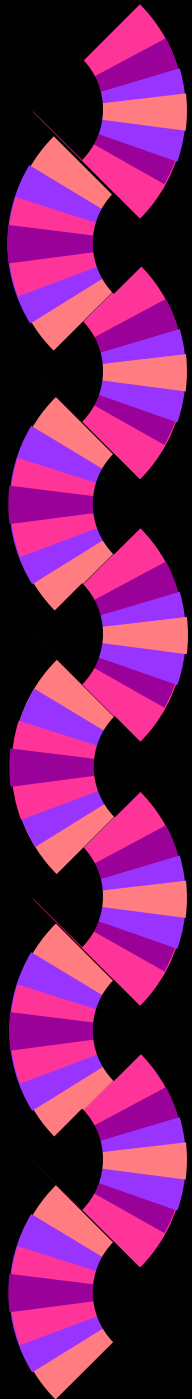
Making the Fins

- Layout (draw) fin pattern on a piece of cardboard.
- Cut out fin pattern.
- Cut 6 pieces of masking tape one inch long.
- Attach a one inch piece of masking tape on one side of the fin/tube attaching the fin.
- Then run a bead of hot glue on the other side.
- Place the second piece of tape over the glue so that each fin is attached with two pieces of tape.



PARTS OF A MODEL ROCKET





Fins Attached to body tube





BILL OF MATERIALS for ENGINE TUBE

3" x 4 1/4 " plain paper

3" x 3" paper tape

1/4" x 3" tinplate

2 - 3/8 x 6" pieces of cardboard

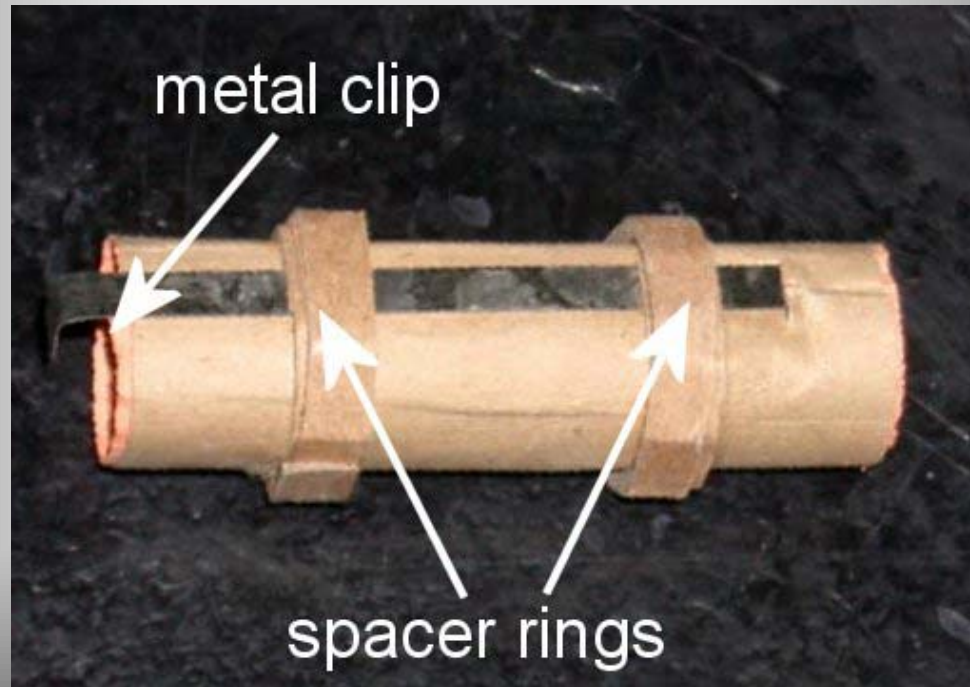
MAKING ENGINE TUBE

Roll Paper around 3/4" Dowel
Rod & Glue



Reinforce tube with paper tape
attached parallel to edge of dowel.

Engine Tube Complete

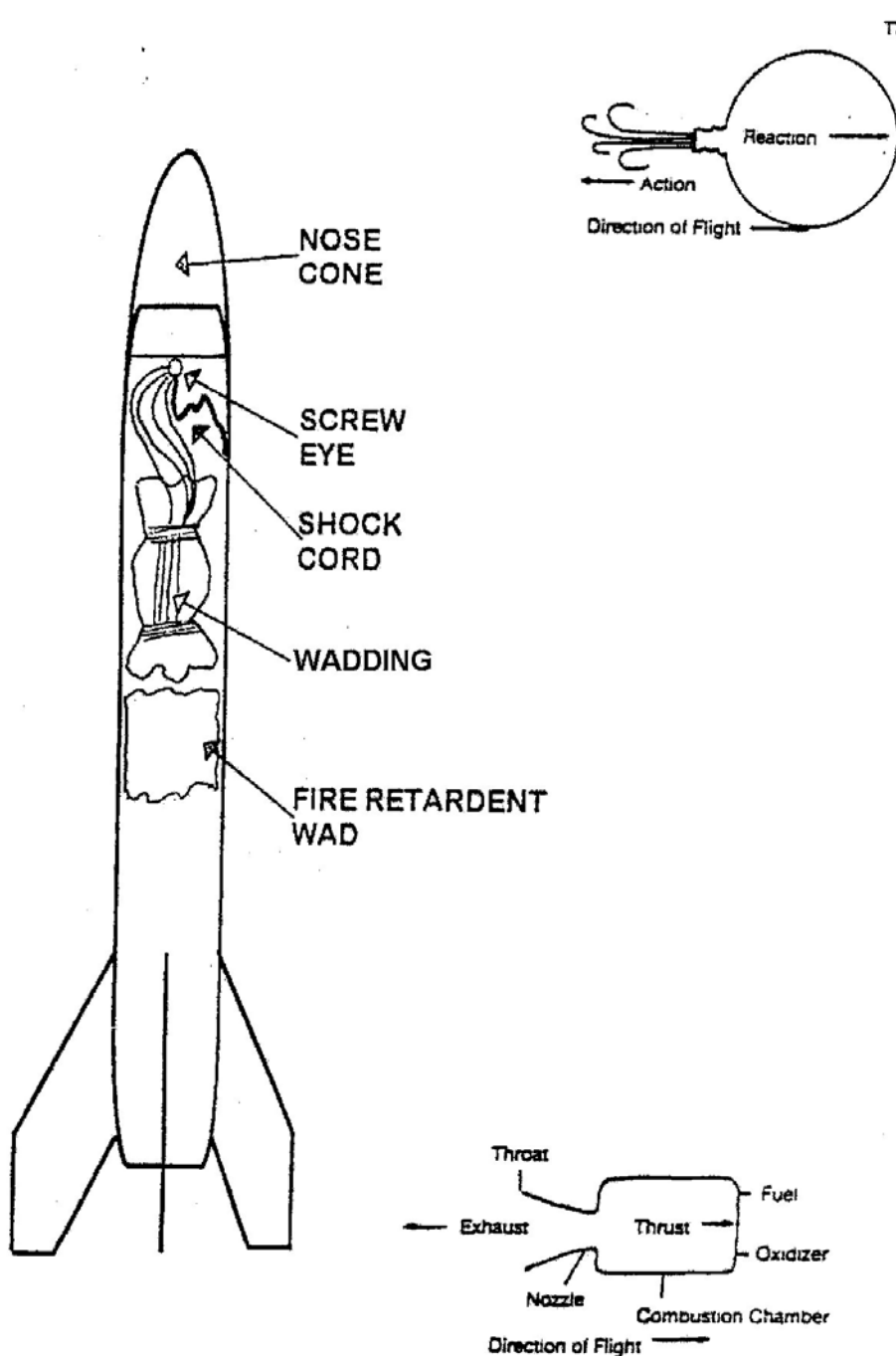
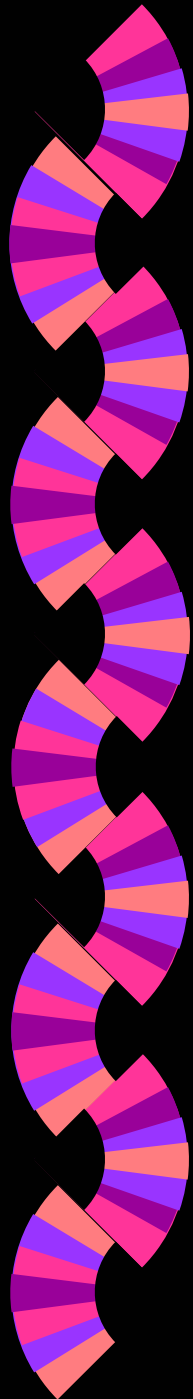


Components of Nose Cone



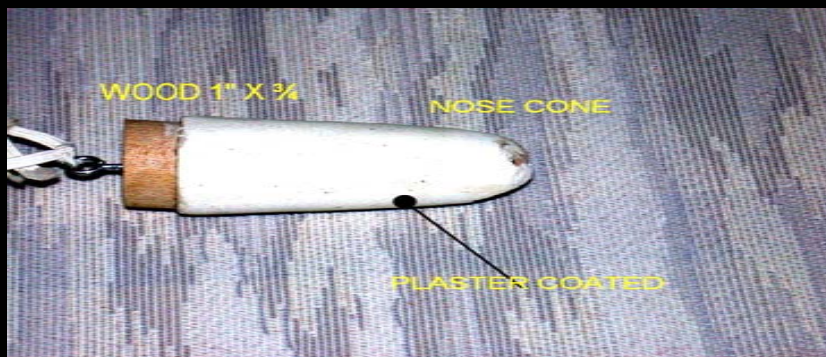
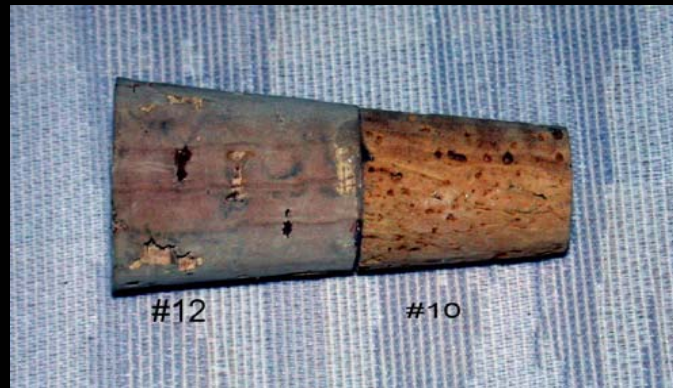
Requirements are:

- 2 - corks #10 & #12
- 1 - 1/2 x 1" Dowel Section



Making the Nose Cone

Glue #10 cork on top of # 12 cork



Glue dowel piece $\frac{1}{2}$ " x 1" to corks and cover with plaster.

Finished & Ready to Launch

Up Up & Away

